

Perustakaan Date: 2018-11-13 01:51 UTC

All sources 2

1 pages, 33 words

For the extraction of text from this document an OCR process was used, please be aware that some characters can be vulnerable to changes.

PlagLevel: selected / overall

1 matches from 2 sources, of which 0 are online sources.

Settings

Data policy: *Compare with web sources, Check against my documents in the organization repository, Check against organization repository, Check against the Plagiarism Prevention Pool*

Sensitivity: *High*

Bibliography: *Consider text*

Citation detection: *Reduce PlagLevel*

Whitelist: *--*

PORGANIC OLES RIVER N G USIQ 2A PPLICATION

EvY Hendrianti(1) and NiekE Karnaningroem(2)

Environmental Quality Manajemen Laboratory, Environmental Engineering Departement, Sepuluh Nopember of Tecnology Institute, Surabaya (1,2)
Email: hendrianti@yahoo.com⁽¹⁾ and nieke@enviro.its.ac.id⁽²⁾

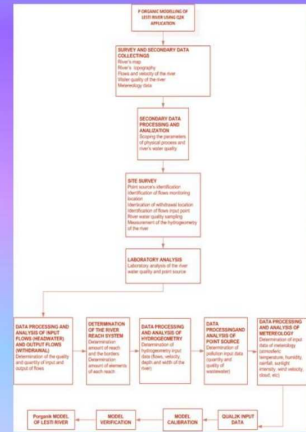
INTRODUCTION

One of the instrument that can predict or simulate water quality changes are called water quality models. (Schnoor, 1996). Brantas river is second biggest river area in Java Island. The area covers 15 (fifteen) regencies and municipalities in East Java Provinsi (Figure 1.) and Lesti river is upstream section of Brantas river.



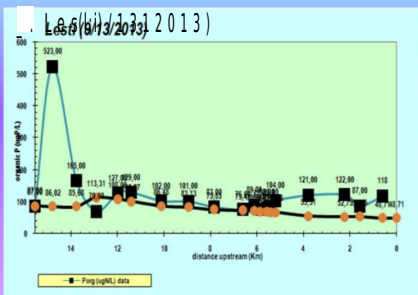
Figure 1. Map of Brantas River Area (Southeast of Brantawati) Brantawati, 2002

Figure 2. Research Activity Flowchart

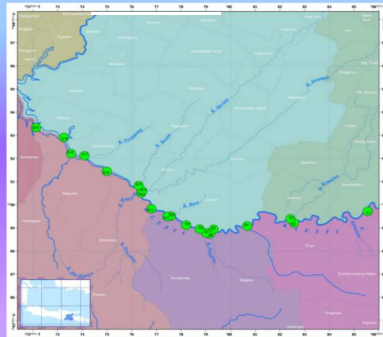


Model Calibration

Result of Porganik model calibration can be seen below.



RESULT River Reach System



Model Verification

Model verification was done using chi square test method (χ^2). If the differences between model and field fulfill the test criteria then the model can be used. Based on computation, χ^2 value are 2,648. The value of χ_0^2 is 10.085 with $n=18$ and $\alpha=0,90$. So, the model is not accepted because $\chi^2 > \chi_0^2$ (2,648 > 10.085).

The reach rates that used for calibration result above can be seen at the right side

| Reach number | Reach Label | Organic P | Concentration |
|--------------|-------------|-----------|---------------|
| I | | 1 | 0.4 |
| II | | 1 | 0.2 |
| Clumprit | | 1 | 0.3 |
| | | 5 | 0.3 |
| VI | | 5 | 0.3 |
| Clumprit | | 5 | 0.3 |
| Ledokan | | 5 | 0.3 |
| Suwaru | | 5 | 0.3 |
| IV | | 5 | 0.3 |
| V | | 5 | 0.3 |
| VII | | 5 | 0.3 |
| VIII | | 5 | 0.3 |
| IX | | 5 | 0.3 |
| Patan | | 5 | 0.3 |
| okerto | | 5 | 0.3 |
| Rejoso | | 5 | 0.3 |
| XIII | | 5 | 0.3 |
| IV | | 5 | 0.3 |
| guruh | | 5 | 0.3 |