


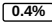

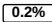

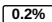
Mariza_Mariza_PLANNING_OF_HUMAN_RESOURCE_COMPETENCY_DEVELOPMENT_IN_PT.XYZ_WITH_TAGUCHI_METHOD.pdf



Prodi Industri Date: 2019-02-27 13:58 WIB

* All sources 33 | Internet sources 11 | Own documents 1 | Organization archive 4 | Plagiarism Prevention Pool 11

✓	[0]	https://docplayer.com.br/85983477-Aequus...e-todo-o-brasil.html	2.5%	1 matches
✓	[3]	from a PlagScan document dated 2017-04-06 06:19	2.0%	1 matches
✓	[4]	"Hutabarat_Julianus_Influence_of_Si...ot; dated 2019-01-30	1.1%	1 matches
✓	[6]	from a PlagScan document dated 2018-01-31 08:47	0.9%	1 matches
✓	[7]	"UKDC9_1_Factors Affecting Performance Lecturer.pdf" dated 2019-02-02	2.8%	11 matches
✓	[8]	from a PlagScan document dated 2018-12-06 05:57	0.8%	1 matches
✓	[10]	from a PlagScan document dated 2017-04-06 07:54	0.6%	1 matches
✓	[13]	from a PlagScan document dated 2017-04-06 09:06	0.5%	1 matches
✓	[14]	from a PlagScan document dated 2018-12-12 17:26	0.4%	1 matches
		1 documents with identical matches		
✓	[16]	from a PlagScan document dated 2017-01-22 20:28	1.0%	2 matches
✓	[17]	https://www.researchgate.net/publication...Wind_Band_Conductors	0.9%	3 matches
✓	[18]	https://www.researchgate.net/profile/Pio...n=publication_detail	0.4%	1 matches
✓	[19]	https://www.researchgate.net/publication...r_Hospitals_in_India	0.3%	1 matches
✓	[20]	https://engineering.virginia.edu/Node/5401	0.3%	1 matches
✓	[21]	https://www.researchgate.net/publication...ND_SPECIAL_EDUCATION	0.7%	3 matches
✓	[22]	https://www.coursehero.com/file/p2j0tsj/...maller-is-better-Se/	0.9%	2 matches
✓	[23]	from a PlagScan document dated 2018-04-04 15:47	0.3%	1 matches
✓	[24]	from a PlagScan document dated 2018-03-07 15:46	0.6%	2 matches
✓	[25]	from a PlagScan document dated 2017-04-06 10:18	0.3%	1 matches
✓	[26]	https://www.researchgate.net/publication...luation_competencies	0.7%	3 matches
✓	[27]	https://en.wikipedia.org/wiki/Allegany_State_Park	0.6%	2 matches
✓	[28]	https://en.wikipedia.org/wiki/Contextual_inquiry	0.5%	2 matches
✓	[29]	https://www.researchgate.net/publication...quality_improvement	0.5%	2 matches
✓	[30]	"617_-_Ainur_Rasyid,_Nugroho_Agung_S.pdf" dated 2019-02-08	0.5%	2 matches

-
- ✓ [31]  "PENGARUH PELATIHAN DAN MOTIVASI KE...ot; dated 2018-11-16
 1 matches
-
- ✓ [32]  from a PlagScan document dated 2018-06-21 15:36
 1 matches
-
- ✓ [33]  "UNIPRA3_3 PERFORMANCE DEVELOPMENT.pdf" dated 2018-06-10
 1 matches
-

Submission information

Last name: *Mariza*

First name: *Mariza*

Paper title: *PLANNING OF HUMAN RESOURCE COMPETENCY DEVELOPMENT IN PT.XYZ WITH TAGUCHI METHOD*

File: *1. Journal of Science and Applied Engineering (JSAE) 2018.pdf*

6 pages, 1665 words

PlagLevel: 8.8% selected / 29.5% overall

47 matches from 34 sources, of which 13 are online sources.

Settings

Data policy: *Compare with web sources, Check against my documents in the organization repository, Check against organization repository, Check against the Plagiarism Prevention Pool*

Sensitivity: *High*

Bibliography: *Consider text*

Citation detection: *Reduce PlagLevel*

Whitelist: *--*

PLANNING OF HUMAN RESOURCE COMPETENCY DEVELOPMENT IN PT.XYZ WITH TAGUCHI METHOD

Mariza K¹⁾; Diah Wilis Lestarinings Basuki²⁾
Industrial Engineering Faculty, National of Technology Institute Malang
Jalan Karanglo Km.2, Malang

ABSTRACT

The problem of human resources is still a concern within the company to remain competitive in this globalization world. This shows that the problem of human resources greatly affect the implementation and success of the company in achieving goals and objectives. The company demand to obtain the development process and get quality human resources more urgent. And the development of human resource competence is necessary. This study uses experimental testing with several parameters of validity and reliability testing. For testing analysis using Taguchi Method. Based on the Response Table for Signal to Noise Ratios Nominal is best obtained taguchi test results obtained values obtained from the effect plot for means with the approach of table of means, then the intellectual competence is needed for the improvement of HR performance.

Keywords: HR, Competence, Taguchi Method

Introduction

Human resources are currently in the spotlight for companies to survive in this era of globalization. Although it has been supported with the best facilities and infrastructure, HR still becomes the key point in determining the success of the company. The demand to obtain maximum results, by developing and maintaining quality human resources increasingly urgent. The necessary changes to support top management as the first step in improving the role of the human resources fungus, to support the success of an organization. Organizational goals will be achieved with positive performance and good work ethic. Vice versa, the organization will experience obstacles if the performance of human resources decreased even not effective. Effort to get performance from good human resources, hence competence test is needed based on certain time and size.

^[7] Creation of qualified human resources has a big role to determine the success or failure in organizing various activities to achieve company goals. ^[7] Assessment of employee performance as an agent in the organization should be projected into the HR performance standard in accordance with its work unit. It aims to improve the process of HR performance.

^[7] Assessment indicators in a company include the work, the ability of employees, customer service and employee performance improvement. Individually can be classified through intellectual, emotional, and social competence.

^[7] The Taguchi method in an experiment of fundamental things that needs to be defined is the purpose of doing experiments so that later after the experiment can be analyzed against the output results to meet the initial goal. In this research, the experiment is done by taguchi method, to get optimum result. ^[7] Therefore, in this research the experiment is used to know the

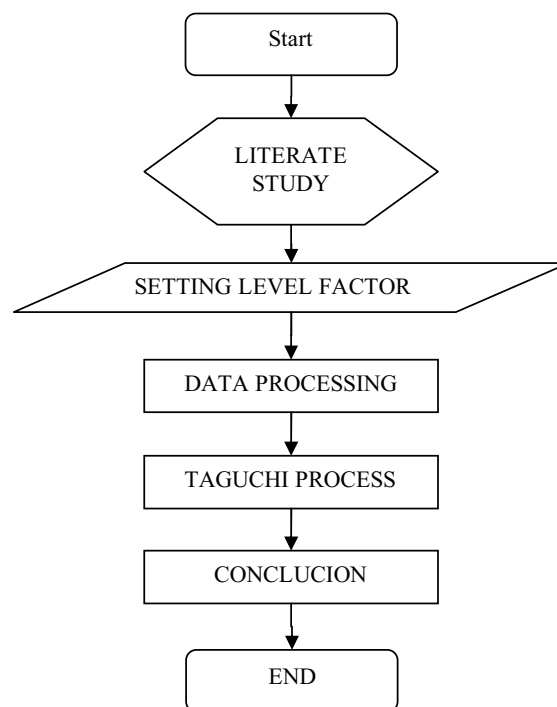
combination of the level of each optimum factor and produce the highest level of interest and understanding.^[26] The purpose of this study, to develop the competenc

Research methods

Research conducted using direct research method (experimental research) by involving several variables, namely knowledge, skill, attitude, and work effectiveness.^[30] This research uses the method of designing tolerance in the optimization of human resources.^[17] Technique Data analysis in this study using ANOVA to determine the significance and the influence of factors, and orthogonal arrays Taguchi so that the design used in the experiment more efficient, and data analysis.

Research variable

- a. Fixed Variables:^[32] Intellectual, Emotional, and Social Competencies.
- b. Free Variable: K (understanding theory, rules, possess knowledge, creative idea)
E (timely, good quality, SOP, attendance)
S (Social norms, cooperation with rules and friends, and communication)



Picture 1. Flow Chart of Research

Research Process

1. Literature Study, aims to obtain the literature needed in the determination of the next step,
2. Field study, in the form of survey location to get situation problem existing in company,
3. Problem formulation, this is developed from research variables,

4. Data retrieval,
5. Data Processing, Analysis,

Taguchi Setting Level Factor

SETTING LEVEL				
FACTOR	I	II	III	IV
INTELLECTUAL COMPETENCY	K1 UNDERSTAND THE THEORY	K2 UNDERSTANDING RULE	K3 HAVE KNOWLEDGE	K4 HAVE A CREATIVE IDEAS
EMOTIONAL COMPETENCY	E1 IMPLEMENTING TIMELY WORK	E2 IMPLEMENT WORK WITH GOOD QUALITY	E3 COMPLETING THE JOB ACCORDING TO THE PROCEDURES	E4 PRESENT ON THE TIME
SOCIAL COMPETENCY	S1 COMPLYING SOCIAL NORMA	S2 COOPERATE WITH RULES	S3 COOPERATION WORKING FOR WORKERS	S4 COMMUNICATE INTER FRIENDS WELL

Table 1. Taguchi Setting Level Factor

RESULT AND DISCCUSION

	C1-T	C2-T	C3-T	C4	C5	C6	C7	C8	C9	C10	C11	C12	C13	C14	C15	C16	C17
1	K1	E1	S1	1	2	3	4	5	6	7	8	9	10	RATA2			
2	K1	E2	S2														
3	K1	E3	S3														
4	K1	E4	S4														
5	K2	E1	S1														
6	K2	E2	S2														
7	K2	E3	S3														
8	K2	E4	S4														
9	K3	E1	S1														
10	K3	E2	S2														
11	K3	E3	S3														
12	K3	E4	S4														
13	K4	E1	S1														
14	K4	E2	S2														
15	K4	E3	S3														
16	K4	E4	S4														

Table 2 Taguchi Method test

INTELLECTUAL COMPETENCY	EMOTIONAL COMPETENCY	SOCIAL COMPETENCY	Responden									
			1	2	3	4	5	6	7	8	9	10
1	1	1	4	5	4	5	4	4	4	3	4	4
1	2	2	3	4	5	4	2	4	4	3	4	4
1	3	3	4	4	3	5	3	5	4	3	4	4
1	4	4	4	3	3	3	3	3	4	3	3	4
2	1	2	4	4	2	2	2	3	3	2	4	2
2	2	1	4	3	3	2	3	3	4	4	3	5
2	3	4	4	4	2	2	3	3	3	4	3	4
2	4	3	4	5	3	2	3	3	4	4	3	5
3	1	3	5	5	3	3	3	4	3	4	4	5
3	2	4	4	3	2	2	2	3	4	3	4	4
3	3	1	4	4	3	2	3	4	4	3	4	4
3	4	2	5	3	3	4	3	4	3	4	4	4
4	1	4	5	5	2	4	3	4	4	4	4	4
4	2	3	5	3	3	4	3	3	4	4	4	5
4	3	2	5	4	3	4	2	5	4	4	5	5
4	4	1	4	2	2	3	2	4	4	3	3	4

SCORE

- 5 = Excellent
- 4 = Good
- 3 = Enough
- 2 = Not Enough
- 1 = Less

Table.3 Test Result

Taguchi Design

Taguchi Orthogonal Array Design

L16(4**3)

Factors: 3
 Runs: 16

Columns of L16(4**5) Array

1 2 3

Taguchi Analysis: 1; 2; 3; ... versus INTELLECTUAL; EMOTIONAL CO; SOCIAL COMPE

Response Table for Signal to Noise Ratios
 Nominal is best ($10 \cdot \log_{10}(\bar{y}^2/s^2)$)

INTELLECTUAL EMOTIONAL SOCIAL
 ENGINEERING FACULTY, UNIVERSITY OF WIDYAGAMA
 EMAIL : jsae@widyagama.ac.id

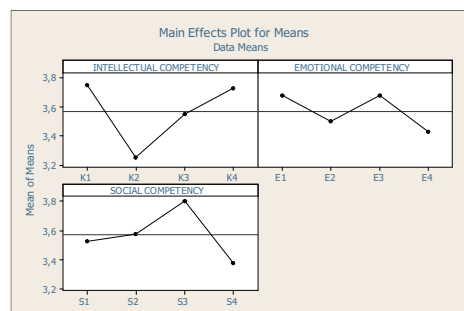
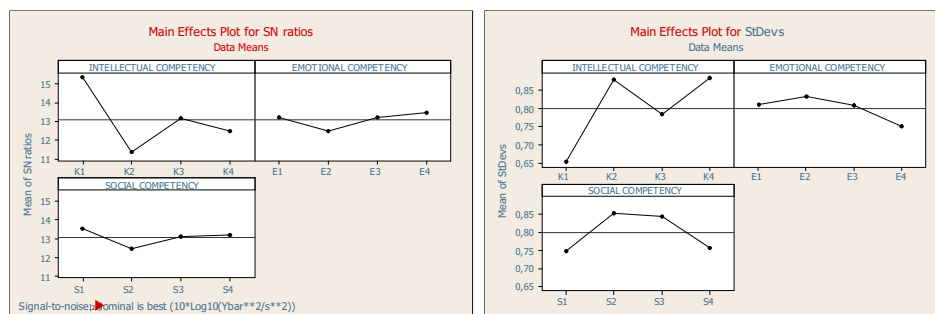
Level	INTELLECTUAL COMPETENCY	EMOTIONAL COMPETENCY	SOCIAL COMPETENCY
1	15,34	13,20	13,54
2	11,34	12,45	12,45
3	13,16	13,21	13,13
4	12,48	13,47	13,20
Delta	4,00	1,02	1,09
Rank	1	3	2

Response Table for Means

Level	INTELLECTUAL COMPETENCY	EMOTIONAL COMPETENCY	SOCIAL COMPETENCY
1	3,750	3,675	3,525
2	3,250	3,500	3,575
3	3,550	3,675	3,800
4	3,725	3,425	3,375
Delta	0,500	0,250	0,425
Rank	1	3	2

Response Table for Standard Deviations

Level	INTELLECTUAL COMPETENCY	EMOTIONAL COMPETENCY	SOCIAL COMPETENCY
1	0,6530	0,8094	0,7484
2	0,8793	0,8327	0,8529
3	0,7833	0,8071	0,8421
4	0,8836	0,7499	0,7558
Delta	0,2307	0,0828	0,1045
Rank	1	3	2



Graph 1. Taguchi Model

Conclusion

Based on the Response Table for Signal to Noise Ratios Nominal is best, indicating that the three factors of intellectual, emotional, and social competence can be ranked by rank. Taguchi test results done got the value of the effect plot for means with the approach of table of means, then the intellectual competence is needed for the improvement of HR performance.
[27]►

Suggestion

This research needs to be developed further with the addition of seminars, training or workshop on an ongoing basis, so as to develop the competence of human resources that will come.
[16]► The addition of survey areas began to respond and survey components to get more optimal for the development of human resources based on the objectives of the company.

References

- Achmad, Zaenudin, 2009. Manajemen Sumber Daya Manusia, Cetakan Kedua, Penerbit Fajar, Jakarta.
[33]►
- Anwar Prabu Mangkunegara, 2001.^[7]► Manajemen Sumber Daya Manusia Perusahaan, Remaja Rosdakarya, Jakarta.
- Azwar, Saifudin, 2004, Reliabilitas dan Validitas, Cetakan V, Pustaka Pelajar, Yogyakarta.
- Cohen, L., 1995.^[28]► Quality Function Deployment : ^[28]► How to Make QFD Work for you, Addison-Wesley Publishing Company, Massachusetts.
- F. Rahmadiano, 2018. Analisa Putaran Spindle dan Kedalaman Potong Terhadap Keausan Pahat Positive dan Negative Rhombic Insert, Institut Teknologi Nasional, Malang.
- F. Rahmadiano, 2014. Upaya Peningkatan Sifat Mekanik Baja Mild Steel Melalui Perbaikan Kualitas dengan Heat Treatment Annealing dan Holding Time pada Heat Treatment dengan Taguchi Method, Universitas Brawijaya, Malang
- Moehariono. 2009. Pengukuran Kinerja Berbasis Kompetensi. Bogor : Ghalia, Indonesia.
- Prawirosentono suyadi, 1999. Kebijakan Kinerja Karyawan. Yogyakarta : BPFE
- Sugiyono, 2004. Metode Penelitian Bisnis, Cetakan Ketujuh, Alfabeta, Bandung.
- Tjiptono, F. dan Diana, A., 2002. Total Quality Management, Edisi keempat Cetakan 2, Andy, Yogyakarta.