

**Proceedings of the
2011 International Conference on Electrical Engineering and Informatics**

Copyright ©2011 by the Institute of Electrical and Electronics Engineers, Inc.
All right reserved

Copyright and reprint permission

Abstracting is permitted with credit to the source. Libraries are permitted to photocopy beyond the limit of U.S. copyright law, for private use of patrons, those articles in this volume that carry a code at the bottom of the first page, provided the per-copy fee indicated in the code is paid through Copyright Clearance Center, 222 Rosewood Drive, Danvers, MA 1923

For other copying, reprint, or reproduction requests should be addressed to IEEE Copyrights Manager, IEEE Service Center, 445 Hoes Lane, P.O. Box 1331, Piscataway, NJ 08855-1331

**IEEE Catalog Number CFP1177H-CDR
ISBN 978-1-4577-0751-3**

Additional copies of this publication is available from

Curran Associates, Inc.
57 Morehouse Lane
Red Hook, NY 12571 USA

+1 845 758 0400
+1 845 758 2633 (FAX)
Email: curran@proceedings.com

2011

INTERNATIONAL CONFERENCE ON ELECTRICAL ENGINEERING AND INFORMATICS

ITB CAMPUS
Bandung, July 17-19 2011

“Towards Converging Technologies”

Biomedical Engineering
Computer Engineering
Control & Computer Systems
Data & Software Engineering
Electrical Power Engineering
Electronics
Informatics
Information Systems & Technology
Telecommunication

Organizer :



School of Electrical Engineering and Informatics
INSTITUT TEKNOLOGI BANDUNG

Co-Organizer :



Faculty of Information Science and Technology
UNIVERSITI KEBANGSAAN MALAYSIA

Sponsors :



IEEE Informatics Society
IEEE Engineering in Medicine and Biology Society Indonesia Chapter
IEEE Security and Systems Services Indonesia Chapter
IEEE Electrical Design, Education, Signal Processing, and Power and
Energy Institute Indonesia Joint Chapter



ISBN: 978-1-4577-0751-3
IEEE Catalog Number: CFP1177H-CDR

CD PROGRAM ICEEI 2011

Preface

**Organizing
Committee**

Content

**List of
Authors**

Search

PREFACE

Welcome to the ICEEI 2011.

International Conference on Electrical Engineering and Informatics (ICEEI) is a biannual scientific meeting in Asia. The scope of the conference covers all fields in Electrical Engineering and Informatics, their methods, technologies, and applications. The conference is intended as a forum for researchers, academics and practitioners to present their research results as well as a platform to build or develop cooperative relationships among participants. This year ICEEI is the 3rd ICEEI with the two previous conferences were successfully held in Bandung, Indonesia (2007) and Selangor, Malaysia (2009).

It is a pleasure to host the ICEEI 2011, the 2011 International Conference on Electrical Engineering and Informatics at Institut Teknologi Bandung (ITB) campus, Bandung, Indonesia. This conference is jointly organized by the School of Electrical Engineering and Informatics (STEI), Institut Teknologi Bandung and the Faculty of Information Science and Technology (FTSM), Universiti Kebangsaan Malaysia (UKM). As in the previous conference, ICEE 2011 is also technically co-sponsored by IEEE.

There were 590s submissions with authors from 33 countries across the continents. After rigorous peer-reviewing by at least two reviewers drawn from external reviewers and the committees, there are about 350 regular papers from 21 countries are accepted for presentations in 62 sessions.

In addition to regular presentations, five keynote speakers, i.e. Prof. G.C. Montanary (University of Bologna, Italy), Prof. A.R. Hamdan (UKM, Malaysia), Prof. R. Bambang (ITB, Indonesia), Prof. M. Hikita (Kyushu Institute of Technology, Japan), Prof. I. Supriana (ITB, Indonesia), are invited to deliver lectures in the field of Electrical Engineering and Informatics.

I am greatly in debt to many people and parties for their enthusiastic efforts that make this conference possible. Participation and supports of all authors, participants, committee members, secretariat, and sponsors are greatly appreciated. I thanks especially to external reviewers for their precious expertise and timely reviews.

Finally, I sincerely hope that all of the participants gain tremendous benefits while having fruitful and enjoyable experiences during the conference at ITB campus, Bandung, Indonesia.

Arief Syaichu-Rohman

General Chair of the ICEEI 2011

ICEEI 2011 COMMITTEES

ORGANIZING COMMITTEE

General Chair

Arief Syaichu Rohman

Finance

Chair: Aciek Ida Wuryandari

Adi Mulyanto

Publication

Chair: Deny Hamdani

Widyawardana Adiprawita

Saiful Akbar

Noraidah Sahari

Rozilawati Razali

Secretariat

Chair: Rinaldi Munir

Ayu Purwarianti

Fazat Nur Azizah

Technical Program

Chair: Tri Desmana Rachmilda

Arief Sasongko

Achmad Munir

Riza Satria Perdana

Ary Setijadi Prihatmanto

STEERING COMMITTEE

Chair: Adang Suwandi Ahmad

Iyas Munawar

Kuspriyanto

Benhard Sitohang

Tati Latifah Mengko

Ngapuli Sinisuka

Yanuarsyah Haroen

Suhono H. Supangkat

Iping Supriana

Trio Adiono

INTERNATIONAL PROGRAM COMMITTEE

Chair: Andriyan Bayu (Indonesia)

Bambang Riyanto (Indonesia)

Dwi Hendratmo (Indonesia)

Benhard Sitohang (Indonesia)

Pekik A. Dahono (Indonesia)

Iping Supriana (Indonesia)

Dina S. Laila (UK)

Agus Geter (Malaysia)

Riza Sulaiman (Malaysia)

Azah Muhamed (Malaysia)

Nurhidajat S. (USA)

Nigel Lovell (Australia)

Michel Paindavoine (France)

Xiaochuan Pan (USA)

F. Magno (Philippine)

Gerard Berger (France)

Maquelonue Teisseire (France)

INTERNATIONAL ADVISORY COMMITTEE

Chair: Suwarno

Abdul Razak Hamdan (Malaysia)

Gian Carlo Montanary (Italy)

Banmongkol Channarong (Thailand)

Masayuki Hikita (Japan)

Leo P. Ligthart (The Netherland)

Ramjee Prasad (Denmark)

Maurice Fadel (France)

Guan-Jun Zhang (China)

Han J. Woong (Korea)

T. Obi (Japan)

Rainer Patsch (Germany)

Lalit Goel (Singapore)

H. J. Busscher (The Netherland)

Dominique Laurent (France)

2011 International Conference on Electrical Engineering and Informatics

(ICEEI 2011)

**Bandung, Indonesia
17-19 July 2011**

Pages 1-924

Editors:

**Arief Syaichu-Rohman
Saiful Akbar
Rozilawati Razali**

**Deny Hamdani
Widyawardhana Adiprawita
Noraidah Sahari**



**IEEE Catalog Number: CFP1177H-PRT
ISBN: 978-1-4577-0753-7**

TABLE OF CONTENTS

Global Monitoring: The Paradigm for Asset Management in the Smart Grid Framework	1
<i>G. C. Montanari, A. Cavallini, M. Tozzi</i>	
MYNDA: An IDSS Generator with Hyperheuristic Attribute Reduction	6
<i>Abdul Razak Hamdan</i>	
Recent Progress in Adaptive Nonlinear Active Noise Control	12
<i>Riyanto T. Bambang, R. Yacoub, R. Hertanza</i>	
Fundamental Principles and Application of Diagnosis for GIS using Partial Discharge Measurements	20
<i>Masayuki Hikita</i>	
Direct Skeleton Extraction using River-Lake Algorithm	26
<i>Iping Supriana, Peb Ruswono Aryan</i>	
Geographical Information System and Web Service Implementation for Volcanic Eruptions Geologic Disasters Surveillance, Monitoring, and Mitigation System	29
<i>Adi Nugroho, Edi Winarko</i>	
Using Organizational Culture Approach and COBIT Framework in Designing of Information Technology Governance on Non Ministerial Government Institute (LPNK), Case Study: Center for Scientific Documentation and Information - Indonesian Institute of Sciences	34
<i>Budi Nugroho, Kridanto Surendro</i>	
Design of Digital Implant for Preoperative Planning in Total Hip Replacement	39
<i>Azrulhizam Shapi, Riza Sulaiman, Mohammad Khatim Hasan, Anton Satria Prabuwo, Abdul Yazid Mohd Kassim, Nor Hazla Mohamed Hafilah</i>	
Implementation of Knowledge Management System in PT Intimas Wisesa	45
<i>Wardani Muhamad, Bambang Hariyanto</i>	
Gate Driver and Feedback Control Design for High Frequency Converter	51
<i>N. Z. Yahaya, S. M. Khalid</i>	
Alleviation of Line Congestion Using Multiobjective Particle Swarm Optimization	58
<i>Sawan Sen, S. Chanda, S. Sengupta, A. Chakrabarti, A. De</i>	
Design of Total Hip Replacement Digital Templating Software	63
<i>Azrulhizam Shapi, Anton Satria Prabuwo, Mohammad Khatim Hasan, Riza Sulaiman</i>	
The Algebraic Reconstruction Technique of Lambert-Beer's Attenuation Approximation for Parallel Rays Transmission Projection	69
<i>M. Amin, D. Sudiana, D. Gunawan</i>	
A Multi-objective Optimisation Algorithm with Swarm Intelligence for Contingency Surveillance	75
<i>Sawan Sen, Sandip Chanda, S. Sengupta, A. Chakrabarti</i>	
Rotor Thermal Sensitivity Experience on 143.4 MVA Hydrogen-Cooled Turbo Generator with Direct-Cooled Rotor Design	81
<i>Andri Febriyanto, Hilarius Tutut Sandewan</i>	
Switching Study for 275 kV Padang Sidempuan – Payakumbuh Transmission Line	87
<i>Dzikri Firmansyah Hakam, Rizki Wahyuni, Eko Yudo Pramono</i>	
Sensitive Loads Voltage Improvement Using Dynamic Voltage Restorer	93
<i>M. N. Tandjaoui, C. Benachaba, O. Abdelkhalek, M. L. Doumbia, Y. Mouloudi</i>	
Academic IS for Higher Education Institutions: The Design of Speedy Courses Registration Transaction Function	98
<i>Veronica S. Moertini, Tety Yuliaty, Wisnu Rumono</i>	
PMD Compensation with Combined Optical Amplifier for 40G Systems	103
<i>D. Andriyanto, D. Tarsono, A. Ahmad, M. Zamzuri</i>	
e-Livestock as a New Paradigm in e-Government	106
<i>Arief Ramadhan, Dana Indra Sensuse</i>	
Small Signal Averaged Model of DC Choppers for Control Studies	110
<i>Amir Hassanzadeh, Mohammad Monfared, Saeed Golestan, Reza Dowlatabadi</i>	
Modelling and Controller Design for a Non-inverting Buck-Boost Chopper	114
<i>Reza Dowlatabadi, Mohammad Monfared, Saeed Golestan, Amir Hassanzadeh</i>	
Analysis of Harmonic Emission from Dimmable Compact Fluorescent Lamps	118
<i>Khodijah Mohamed, Hussain Shareef, Azah Mohamed</i>	
Identifying Software Quality Factors for Telecommunication Industry in Malaysia	123
<i>Nor Fazlina Iryani Abdul Hamid, Mohamad Khatim Hasan</i>	
Dynamic Load Control Mechanism in Hierarchical MIPv6	128
<i>Zulkeflee Kustin, Mohamad Shanudin Zakaria</i>	

Risk-Based Voltage Collapse Assessment Using Generalized Regression Neural Network	133
<i>Marayati Marsadek, Azah Mohamed, Zulkifli Mohd. Nopiah</i>	
The Efficient mCBE Algorithm and Quantization Numbers for Multiplierless and Low Complexity DCT/IDCT Image Compression Architecture	139
<i>Rachmad Vidya Wicaksana Putra, Rella Mareta, Nurfitri Anbarsanti, Trio Adiono</i>	
The Enhancement of Computation Technique By Combining RSA and El-Gamal Cryptosystems.....	145
<i>Jassim Mohammed Ahmed, Zulkarnain Md Ali</i>	
Out of Vocabulary Detection in Indonesian Speech Recognition Using Word and Syllable Level Decoding	150
<i>Aswin Juari, Ayu Purwarianti</i>	
Current-Mode Third-Order Quadrature Oscillator Using Minimum Elements	158
<i>Montree Kumngern, Somyot Junnapiya</i>	
Fully Integrated Current-Mode Quadrature Sinusoidal Oscillator Circuit	162
<i>Montree Kumngern, Jirasak Chanwuttitum, Kobchai Dejhan</i>	
Voltage-Controlled Floating Resistor Using Differential Difference Amplifier	166
<i>Montree Kumngern</i>	
Detection and Reconstruction of Geometric Object Based on Line Detection Using Radon Transform	170
<i>Marlindia Ike Sari, Andriyan B. Suksmono, Iwan Iwut</i>	
A Novel Power Swing Detection Algorithm Using Adaptive Neuro Fuzzy Technique	176
<i>Ahad Esmaelian, Sajjad Astinfeshan</i>	
COTS Software Evaluation and Selection: A pilot Study Based in Jordan Firms.....	182
<i>Feras Tarawneh, Fauziah Baharom, Jamaiah Ij. Yahaya, Azida Zainol</i>	
Inertial Measurement Unit Using Multigain Accelerometer Sensor and Gyroscope Sensor.....	187
<i>Adhi Susanto, Wahyu Widada, Sasongko Pramono Hadi</i>	
Rural Internet Service System based on Delay Tolerant Network (DTN) Using Train System.....	192
<i>Emir Husni</i>	
Telemedicine System Based on Delay Tolerant Network	197
<i>Emir Husni, Jacqueline Waworundeng</i>	
CAMSHIFT Improvement on Multi-Hue and Multi-Object Tracking.....	202
<i>P. Hidayatullah, H. Konik</i>	
Gene Network Modelling Using Computational Method by Integrating with Prior Knowledge.....	208
<i>Suhaila Zaimudin, Nur Shazila Mohamed</i>	
Developing Local Languages Repository System Using Semantic Web Technology	213
<i>Wikan Damar Sunindyo, Adi Mulyanto, Yani Widyani, Tricya Esterina Widagdo</i>	
Maximum Power Point Tracker as Regulated Voltage Supply using Ripple Correlation Control	219
<i>Felix Yustian Setiono, Leonardus Heru Pratomo</i>	
A Non Deterministic Indonesian Stemmer	225
<i>Ayu Purwarianti</i>	
Predictive Models for Dengue Outbreak Using Multiple Rulebase Classifiers	230
<i>Azuraliza Abu Bakar, Zuriyah Kefli, Salwani Abdullah, Mazrura Sahani</i>	
Classification Models for Outbreak Detection in Oil and Gas Pollution Area	236
<i>Azuraliza Abu Bakar, Nurfathehah Idris, Abdul Razak Hamdan, Zalinda Oihman, Mohd Zakri Ahmad Nazari, Suhaila Zaimudin</i>	
The Estimation of Flashover Voltage as 20 kV Outdoor Insulator in Tropical Environment Based on Leakage Current Data.....	242
<i>Valdi Rizki Yandri</i>	
Reconstruction of Fractional Brownian Motion Signals From Its Sparse Samples Based on Compressive Sampling	247
<i>Andriyan Bayu Suksmono</i>	
Development of a Cost-effective Shooting Simulator using Laser Pointer.....	253
<i>Aryuanto Soetedjo, Eko Nurcahyo, Yusuf Ismail Nakhoda</i>	
Modeling of Wind Energy System with MPPT Control	258
<i>Aryuanto Soetedjo, Abraham Lomi, Widodo Puji Mulayanto</i>	
Comparing Membrane Computing Simulation Strategies of Metabolic and Gillespie Algorithms with Lotka-Volterra Population as a Case Study	264
<i>Ravie Chandren Muniyandi, Abdullah Mohd. Zin</i>	
Model Predictive Control Implementation on a Programmable Logic Controller for DC Motor Speed Control.....	270
<i>Arief Syaichu-Rohman, Raphael Sirius</i>	
Internally Generated 21.6-GHz Millimeter Wave Based on Brillouin Fiber Laser	274
<i>R. Mohamad, A. K. Zamzuri, S. Yaakob, S. M. Idrus, A. S. Supaat</i>	

Balanced Scorecard KPI Formulation of SAPA IT Division and Mobile Web Application Implementation	277
<i>Yusep Rosmansyah, Husni Mubarak, Rio Yunanto</i>	
Optimal Investment and Consumption Strategies for Small Investor Using Bellman's Principle of Optimality	283
<i>B. A. Surya, R. Aswin Rahadi, Ruben Julianto</i>	
An Effective Power Quality Monitor Placement Method Utilizing Quantum-Inspired Particle Swarm Optimization	287
<i>Ahmad Asrul Ibrahim, Azah Mohamed, Hussain Shareef, Sakti Prasad Ghoshal</i>	
Design of Single-Transversal-Mode VCSEL with Photonic Crystal Holey Cladding	293
<i>Sherwin R. Sompie, Henri P. Uranus</i>	
Numerical Analysis of Electric Field at the Contact Point Between a Spacer Aerial Cable and a Spacer	298
<i>Vatcharin Saithongin, Boonchai Techaumnat</i>	
Automatic Classification of Tuberculosis Bacteria Using Neural Network	303
<i>Riries Rulaningtyas, Andriyan B. Suksmono, Tati L. R. Mengko</i>	
Detection of Cerebral Aneurysms by Using Time Based Parametric Color Coded of Cerebral Angiogram	307
<i>H. Zakaria, A. Kurniawan, T. L. R. Mengko, O. S. Santoso</i>	
Visualization of FTSM Building Based on Integration of CAD and Database System	311
<i>Haikal Nando Winata, Syaimak Abdul Shukor</i>	
Manufacturability Analysis System for Micromilling	317
<i>Syaimak Abdul Shukor</i>	
Ontological Based Clinical Decision Support System (CDSS) for Weaning Ventilator in Intensive Care Unit (ICU)	323
<i>Farahidayah Bt. Mahmud, Maryati Mohd Yusof, Shahrul Azman Naah</i>	
Block-based Programming Approach: Challenges and Benefits	328
<i>Siti Nor Hafziah Mohamad, Ahmed Patel, Rodziah Latih, Qais Qassim, Liu Na, Yiqi Tew</i>	
Optimized 8-Level Turbo Encoder Algorithm and VLSI Architecture for LTE	333
<i>Ardimas Andi Purwita, Arnaud Setio, Trio Adiono</i>	
The Development of CAD System for SME Food Packaging in Malaysia: A Proposal	339
<i>Suziyanti Marjudi, Riza Sulaiman, Mohd. Fahmi Mohamad Amran, Saliyah Kahar, Khairul Annuar Abdullah</i>	
Statistical Study on Tree Inception Voltage of Silicone Rubber and Epoxy Resin	343
<i>M. H. Ahmad, H. Ahmad, N. Bashir, Z. A. Malek, Y. Z. Arief, R. Kurnianto</i>	
The Determination of Critical Points on High Voltage / Extra High Voltage Over-Head Lines Caused by Lightning Strikes using Severity Indexes Method	349
<i>Eko Yudo Pramono, Dzikri Firmansyah Hakam, Reynaldo Zoro</i>	
HV/EHV Transmission Lines Performance Calculation of Lightning Stroke by Using Corridor Method	353
<i>Eko Yudo Pramono, Reynaldo Zoro, Rizki Wahyuni</i>	
An Indonesian Question Analyzer to Enhance the Performance of Indonesian-English CLQA	361
<i>M. Iqbal Faruqi, Ayu Purwarianti</i>	
A Non Word Error Spell Checker for Indonesian using Morphologically Analyzer and HMM	367
<i>Moch Yusup Soleh, Ayu Purwarianti</i>	
Assessment of GIS Implementation in Indonesian e-Government System	373
<i>Arief Ramadhan, Dana Indra Sensususe, Anlati Murni Arymurthy</i>	
Instructor's Success Measures of Learning Management System	379
<i>Ibrahim Abood Almrashdeh, Noraidah Sahari, Nor Azan Mat Zin, Mutasem Alsmadi</i>	
A Secure Trust Establishment in Wireless Sensor Networks	386
<i>Farruh Ishmanov, Sung Won Kim</i>	
Strategic Decision Making based on A3S Information-Inferencing Fusion Method	392
<i>Arwin Datumaya Wahyudi Sumari, Adang Suwandi Ahmad, Aciek Ida Wuryandari, Jaka Sembiring</i>	
Analysis of the Effect of Rainfall Intensity in Jakarta and Tangerang to the Performance of Free Space Optics Communication System	398
<i>Riberty W. L. Bouna, Henri P. Uranus</i>	
AI Based Economic Load Dispatch Incorporating Wind Power Penetration	404
<i>A. Naresh Kumar, D. Suchitra</i>	
Microcontroller Based Environmental Control for Swiftlet Nesting with SMS Notification	412
<i>Djunaidi Tristanto, Henri P. Uranus</i>	
A Novel Control Technique for Single-Phase Grid-Connected Inverters	417
<i>S. Golestan, M. Monfared, J. M. Guerrero</i>	

Performance Study of 1 Bit Static RAM Based on Process Technologies	423
<i>N. Tumiran, M. Awan</i>	
Image Correlation Analysis for Biometric Identification	428
<i>Yan Hu, Jin Zhang, Wenfeng Hang</i>	
SPQF: Software Process Quality Factor - For Software Process Assessment and Certification	433
<i>Fauziah Baharom, Jamaiah Yahaya, Aziz Deraman, A. Razak Hamdan</i>	
A MAC Throughput over Rayleigh Fading Channel in the 802.11a/g/n-based Mobile LAN	440
<i>Ha Cheol Lee</i>	
Generating Tailored Summary of Scientific Paper from Rhetorical Document Profile	447
<i>Mohammad Dimas, Masayu Khodra</i>	
Feng Shui Expert System for Evaluating Residential Architectural Design	452
<i>Nabila As'Ad, Masayu K. Leylia</i>	
Modeling and Designing Wireless Energy Transfer Circuit in High Voltage Based on Magnetic Coupling	458
<i>Taghi Mohamadi</i>	
Word Sense Disambiguation in Information Retrieval Using Query Expansion	462
<i>F. B. Dian Paskalis, M. L. Khodra</i>	
Mitigation of Outdoor Insulators Failure using Silicone Coating	468
<i>Ario Basuki, Su Warno</i>	
Underwater Acoustic Signal Processing for Detection and Quantification of Fish	473
<i>Henry M. Manik</i>	
Effects of Electric Arc on the Dielectric Properties, Partial Discharge Patterns and Dissolved Gases in Silicone Oil	476
<i>Su Warno, Ishak Nasutton</i>	
Evaluation of 20 kV Cable Diagnostic Method in Field Condition	481
<i>N. Fauziah, B. S. Munir, E. Sinambela</i>	
Ubiquitous Healthcare System: A Design on the Remote Monitoring Based On Walking Activities	487
<i>Wildan Thoyib, Eun-Sook Lee, Man-Gon Park</i>	
Intelligent Schema Integrator (ISI): A Tool to Solve the Problem of Naming Conflict for Schema Integration	493
<i>Kamsuriah Ahmad, Hea Khim Chiew, Reduan Samad</i>	
Effects of Temperature on the Breakdown Voltage and Partial Discharge Patterns of Biodegradable Oil	498
<i>Su Warno, Herl Sutikno</i>	
Heuristic Evaluation of Distance Learning Management System Interface	504
<i>Ibrahim Abood Almarashdeh, Noraidah Sahari, Nor Azan Mat Zin</i>	
Variable HVDC Supply using Fly back Transformer with Several Protective Features to the Output Power BJT/ MOSFET	510
<i>Muhammad Mukhtadir Rahman, Md. Asif Istiaq</i>	
Working Frequency in Wireless Power Transfer for Implantable Biomedical Sensors	514
<i>Taghi Mohamadi</i>	
Implementation of Multimodal Biometrics Recognition System Combined Palm Print and Palm Geometry Features	519
<i>Yanuar Adhinagara, B. W. Tjokorda Agung, Retno Novi Dayawati</i>	
Fire Alarm System Based-on Video Processing	524
<i>Iping Supriana Suwardi, W. Tjokorda Agung Budi</i>	
Radial Basis Function Networks for Modeling Marine Electromagnetic Survey	531
<i>Agus Arif, Vijanth S. Asirvadam, M. N. Karsiti</i>	
Architecture for Quality of Service Guarantee using Finite Time Response-HTTP	536
<i>Sinung Suakanto, Su Hardi</i>	
Virtual Interaction on Augmented Reality with Nonparametric Belief Propagation Algorithm as Tracker	541
<i>Yoki Ariyana, Aciek Ida Wuryandari</i>	
Insulating Performance of LLDPE/Natural Rubber Blends by Studying Partial Discharge Characteristics and Tensile Properties	549
<i>Mohamad Zul Hilmey Bin Mahmud, Aulia Sayuti, Yanuar Z. Arief, Mat Uzir Wahit</i>	
Dependency Parsing for Indonesian	553
<i>Mia Kamayani, Ayu Purwarianti</i>	
A Performance-Oriented Interface Design Model of Web Applications	558
<i>Razale Ibrahim, Rozilawati Razali</i>	
Design of 12-Bit, 40 MS/s Pipeline ADC for Application in WiMAX Transceiver	564
<i>Sti Intan, Mervin T. Hutabarat</i>	

Least-Squares Polynomial Quasi-Monte Carlo for Short-Term Generation Unit Asset Valuation	568
<i>N. Sisworoahardjo</i>	
Approaches to Develop Oracle for Detecting Deception in Online Chatting Software	574
<i>Z. Shukur, A. H. Nasution, A. A. Wibowo</i>	
Evaluation and Optimization of Java Object Ordering Schemes	577
<i>Amil A. Ilham, Kazuaki Murakami</i>	
Human Resources Information Systems (HRIS) for Military Domain – A Conceptual Framework	583
<i>Mohamad Mohamad Noor, Rozilawati Razali</i>	
An Assessment Model of Information Security Implementation Levels	588
<i>Mohd Asri Mohamad Stambul, Rozilawati Razali</i>	
Direct Access in Content-Based Audio Information Retrieval: A State of The Art and Challenges	594
<i>Hery Heryanto, Saiful Akbar, Benhard Sitohang</i>	
Analysis and Benchmarking Performance of Real Time Patch Linux and Xenomai in Serving a Real Time Application	600
<i>Mastura Diana Marieska, Achmad Imam Kistijantoro, Muhammad Subair</i>	
Performance Measurement System Based On Value Co-Creation Model	606
<i>Wan Azlin Zurita Wan Ahmad, Yazrina Yahya, Muriati Mukhtar</i>	
Comparison of PUMA and CUNWRAP to 2-D Phase Unwrapping	611
<i>Nurjannah Syakrani, Tati L. R. Mengko, A. B. Suksmo, Eddy T. Baskoro</i>	
High Voltage Transformer Bushing Problems	617
<i>Henny I. Septyani, Indera Arifianto, Andreas P. Purnomoadi</i>	
Matrix Characteristics for Two Dimensional Nongroup Cellular Automata	621
<i>J. Santoso, O. Slamet Santoso, B. Riyanto Trilaksono</i>	
The Study of Triplen Harmonics Currents Produced by Salient Pole Synchronous Generator	625
<i>M. F. Abdullah, N. H. Hamid, Z. Baharudin, M. F. I. Khamis, M. H. M. Nasir</i>	
Designing Mobile Services For MARDI	630
<i>Daud Endam, Yazrina Yahya, Muriati Mukhtar, Wan Azlin Zurita Wan Ahmad</i>	
Framework Development of Electronic Marketing (EM): A Case Study on Catfish Industry in Malaysia	635
<i>Buani Atiqi Abdul Rahman, Yazrina Yahya, Muriati Mukhtar</i>	
A Process for Building Domain Ontology: an Experience in Developing Solat Ontology	639
<i>Saidah Saad, Naomie Salim, Hakim Zainal, Zurina Muda</i>	
A Case of Computer Laboratory Layout Modelling and Analysis	644
<i>Hairulliza Mohamad Judi, Yeoh Zhi Cheng, Tan Boon Seong, Lim Zi Yuan, Ho Hoe Yen, Ling Wai Voon</i>	
The Mapping of Interconnected SOA Governance and ITIL v3.0	648
<i>Fitri Susanti, Jaka Sembiring</i>	
COLLAPEDIA : Encyclopedia of Collaborative Environment	653
<i>Anisa Herdiani, Husni S. Sastramihardja</i>	
Short Messaging System (SMS) Framework Development: A Case Study of Catfish Industry in Malaysia	659
<i>Nor Fazliza Abdul Aziz, Yazrina Yahya, Muriati Mukhtar</i>	
∞H Controller Synthesis for Networked Control Systems with Time Delay System Approach	664
<i>Wrastawa Ridwan, Riyanto T. Bambang</i>	
Experiments in Malay Information Retrieval	669
<i>T. Mohd Tengku, Zainab Abu Bakar, Fatimah Ahmad</i>	
UAV Path Planning Using Potential Field and Modified Receding Horizon A* 3D Algorithm	674
<i>Taufik Khuswendi, Hilwadi Hindersah, Widyawardana Adiprawita</i>	
Enhancing Security in E-health Services using Agent	680
<i>Rossilawati Sulaiman, Dharmendra Sharma</i>	
Development of Indonesian Handwritten Text Database for Offline Character Recognition	686
<i>Peb Ruswono Aryan, Iping Supriana, Ayu Purwarianti</i>	
Indonesian Automatic Speech Recognition System Using English-Based Acoustic Model	690
<i>Veri Ferdiansyah, Ayu Purwarianti</i>	
Traffic Sign Recognition with Color-based Method, Shape-arc Estimation and SVM	694
<i>David Soendoro, Iping Supriana</i>	
Framework of Visual Interface for Children’s Digital Library	700
<i>Tengku Siti Meriam Tengku Wook, Noraidah Sahari Ashaari, Siti Fadzilah Mat Noor</i>	
Flash Notes and Easy Electronic Software (EES): New Technique to Improve Digital Logic Design Learning	704
<i>Norul Huda Yusof, Rosilah Hassan</i>	
VLSI Design of a High-Throughput Discrete Cosine Transform for Image Compression Systems	710
<i>A. Pradini, T. M. Roffi, R. Dirza, T. Adiono</i>	

Hand Detection for Virtual Touchpad	716
<i>Gerard Edwin, Iping Supriana</i>	
Location Recognition Using Detected Objects in an Image	721
<i>Aris Feryanto, Iping Supriana</i>	
Blood Parasite Identification using Feature Based Recognition	725
<i>Ferdian Thung, Iping Supriana Suwardi</i>	
Multi Input Multi Output Frequency Sampling Filters for Real System Applications	729
<i>Muhammad Hilmi R. A. Aziz, Rosmiwati Mohd-Mokhtar</i>	
Content-Targeted Advertising using Genetic Programming	735
<i>Rizky Delfianto, Masayu Leylia Khodra, Aristama Roesli</i>	
Integrated Parent Information System (SMIB) to Increase Parental Involvement in Children's Learning Process in Malaysian Primary School	740
<i>Amirul Azuani Romle, Dalbir Singh</i>	
Assessing Suitability of Candidates for Selection Using Candidates' Profiling Report	746
<i>Norsyidah Mat Saat, Dalbir Singh</i>	
Structured Algorithm to Extend the Numeric Range of n-bit Binary Number	752
<i>Ltanly Rompis</i>	
Multicultural Adaption Framework in Geographical Information System (GIS) Interface Design	758
<i>Hazwani Nordin, Dalbir Singh</i>	
Managing Data Source Quality for Data Warehouse in Manufacturing Services	764
<i>Norizam Idris, Kamsuriah Ahmad</i>	
Early Learning Malay Vocabulary Using Speech Technology: Dual Code Theory Approach	770
<i>Noor Ain Rosly, Dalbir Singh</i>	
Condition Assessment of 500/150 kV Power Transformer based on Condition Based Maintenance	776
<i>Ninil U. A. Wardani, A. P. Purnomoadi, H. I. Septiani, I. Arifianto, B. Cahyono</i>	
Improvement of High-Power-White-LED Lamp Performance by Liquid Injection	780
<i>T. M. Roffi, I. Idris, K. Uchida, S. Nozaki, N. Sugiyama, H. Morisaki, F. X. N. Soelami</i>	
Computer Game Based Learning Approach for Mandarin Language	786
<i>Annisa Dwiana, Dalbir Singh</i>	
Dynamic Overlapping Clustering Algorithm for Wireless Sensor Networks	792
<i>Amin Suharjono, Gamantyo Hendratoro</i>	
Domain Specific Language (DSL) Development for Desktop-based Database Application Generator	798
<i>Steven Lolong, Achmad I. Kistijantoro</i>	
Human Action Recognition Using Dynamic Time Warping	804
<i>Samsu Sempena, Nur Ulfa Maulidevi, M. T. Peb Ruswono Aryan</i>	
Parallel Processing for Fingerprint Features Extraction	809
<i>G. Indrawan, B. Sitohang, S. Akhar</i>	
Business Metadata with the STA Data Modelling Technique	815
<i>Ibrahim Mohamed, Mohamed Fauzan Noordin</i>	
Mobile Robot Localization Using Augmented Reality Landmark and Fuzzy Inference System	819
<i>Kusprasapta Mutljarsa, Widyawardana Adiprawita, D. S. Hamdi Reza</i>	
Performance Analysis of Space-Time Turbo Trellis Codes in Rayleigh Fading Channel	825
<i>Subuh Pramono</i>	
Knowledge Based System for Supporting Genomic Based Personalized Medicine	830
<i>Restya Winda Astari, Chitra H. Ayuningtyas, G. A. Putri Saptawati</i>	
An Analysis of Edge Detection as a Feature Extractor in a Hand Gesture Recognition System based on Nearest Neighbor	835
<i>Regina Lionnie, Ivanna K. Timotius, Iwan Setyawan</i>	
Composite Field Multiplier based on Look-Up Table for Elliptic Curve Cryptography Implementation	839
<i>Marisa W. Paryasto, Budi Rahardjo, Fajar Yuliatwan, Intan Mughtadi-Alamsyah</i>	
Performance Analysis of Relief and mRMR Algorithm Combination for Selecting Features in Lupus Genome-Wide Association Study	843
<i>Ivan Nugraha, Chitra H. Ayuningtyas, G. A. Putri Saptawati</i>	
Reducing Perceptual Discontinuity in Peer-to-peer Live Video Streaming Based on Frame Loss Visibility Information	848
<i>Ricky Christanto, Shaou-Gang Miaou, Ting-Lan Lin</i>	
Facial Expression Control of 3-Dimensional Face Model Using Facial Feature Extraction	854
<i>Abraham Ranardo Sumarsono, Iping Supriana Suwardi</i>	
Simulation System of Color Blind Glasses by Image Processing	859
<i>Ginanjar Fahrul Muttaqin, Iping Supriana Suwardi</i>	

Webcam Virtual Keyboard	863
<i>Sanrio Hernanto, Iping Supriana Suwardi</i>	
Web Screening Model Using Multiple Features	868
<i>Zulaiha Ali Othman, Juhana Salim, Zainal Badli</i>	
Whip: A Framework for Mashup Development with Block-based Development Approach	874
<i>Rodziah Latih, Ahmed Moosajee Patel, Abdullah Mohd. Zin, Tew Yiqi, Siti Hafizah Muhammad</i>	
GPGPU Implementation of on-Line Point to Plane 3D Data Registration	880
<i>Janusz Bedkowski, Andrzej Mas-owski</i>	
A Comparative Study of Feature Ranking Methods as Dimension Reduction Technique in Genome-wide Association Study	886
<i>Chitra H. Ayuningtyas, G. A. Putri Saptawati, Tati L. E. R. Mengko</i>	
Incident Detection Algorithm Based on Radon Transform using High-Resolution Remote Sensing Imagery	891
<i>Seyed Mostafa Mousavi Kahaki, M. D. Jan Nordin, Amir Hossein Ashtari</i>	
Multimedia Broadcast Multicast Service over Single Frequency Network (MBSFN) in LTE based Femtocell	896
<i>F. X. A. Wibowo, Arya. A. P. Bangun, A. Kurniawan</i>	
A Syariah Compliant e-Auction Framework	901
<i>Surlati Jamalludin, Norleyza Jailani, Shofian Ahmad, Salha Abdullah, Muniaty Mukhtar, Marini Abu Bakar, Mariani Abdul Majid, Mohd Rosmadi Mokhtar</i>	
Improved Range-free Localization Methods for Wireless Sensor Networks	907
<i>Prima Kristalina, Gamantyo Hendratoro</i>	
A Framework to the Development of Islamic Ontology: Symbiosis of Thesaurus and Domain Expert in Ontology Development	913
<i>Juhana Salim, Siti Farhana Mohamad Hashim, Shahrul Azman Mohd. Noah</i>	
License Plate Recognition with Multi-threshold based on Entropy	919
<i>Nor Hanisah Zainal Abidin, Siti Norul Huda Sheikh Abdullah, Shahnorbamun Sahran, Farshid Pirahansiah</i>	

ICEEI2011

CERTIFICATE

This certificate is awarded to

Aryuanto Soetedjo

In recognition of the support and invaluable services rendered as a

PRESENTER

on the occasion of the
2011 International Conference on Electrical Engineering and Informatics
held on July 17-19, 2011 in Bandung, Indonesia

Organizer



School of Electrical Engineering and Informatics
INSTITUT TEKNOLOGI BANDUNG, Indonesia

Co-Organizer :



Faculty of Information Science and Technology
UNIVERSITY KEBANGSAAN MALAYSIA, Malaysia

Sponsors :



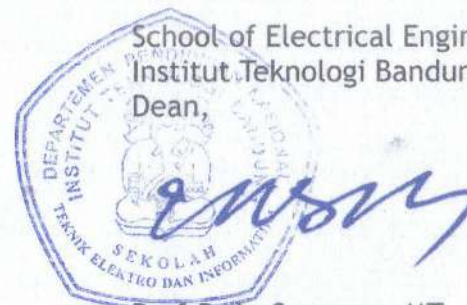
IEEE Indonesia Section
IEEE Engineering in Medicine and Biology Society-Indonesia Chapter
IEEE Circuits and Systems Society-Indonesia Chapter
IEEE Electron Devices, Education, Signal Processing and Power and
Energy Systems-Indonesia Joint Chapter

ICEEI 2011 Committee
General Chair,



Ir. Arief Syaichu-Rohman, MEngSc, PhD

School of Electrical Engineering and Informatics
Institut Teknologi Bandung
Dean,



Prof. Dr. Ir. Suwarno, MT.

Modeling of Wind Energy System with MPPT Control

Aryuanto Soetedjo^{#1}, Abraham Lomi^{#2}, Widodo Puji Mulayanto^{#3}

[#]*Department of Electrical Engineering, National Institute of Technology (ITN) Malang
Jalan Raya Karanglo Km. 2 Malang, Indonesia*

¹aryuanto@gmail.com

Abstract— This paper presents the modeling of wind energy systems using MATLAB Simulink. The model considers the MPPT (Maximum Power Point Tracking) technique to track the maximum power that could be extracted from the wind energy, due the non-linear characteristic of the wind turbine. The model consists of wind generation model, converter model (DC-DC converter), and MPPT controller. The main contribution of our work is in the model of DC-DC converter (buck converter) which is developed in rather details, which allows the MPPT controller output (duty cycle) adjusts the voltage input of the converter to track the maximum power point of the wind generator. The simulation results show that the developed model complies with the theoretical one. Further the MPPT control shows a higher power output compared to the system without MPPT.

Keywords— wind turbine, MPPT, buck converter.

I. INTRODUCTION

Nowadays, demands for the renewable energy resources are increase significantly. The most popular ones are wind energy and solar energy resources. Both offer advantages such as free and clean. But, the wind energy has a lower installation costs compared to the solar energy [1],[2]. The main problem of wind energy system is that its availability is sporadic, and therefore it should be backed by the other power resources [3].

The wind energy system extracts the wind energy and converts it to the electrical energy. The output power of wind energy system varies depend on the wind speed. Due the non-linear characteristic of the wind turbine, it is a challenging task to maintain the maximum power output of the wind turbine for all wind speed conditions. There are extensive researches concerning with the approaches to track the maximum power point of the wind turbine called as MPPT (Maximum Power Point Tracking) control [1] – [12].

There are three common MPPT methods [13], i.e. : a) perturbation and observation (P&O) or hill climbing searching (HCS) [1],[5],[7],[9],[10]; b) wind speed measurement (WSM) [3],[4],[8],[11]; c) power signal feedback (PSF) [6,7]. In the P&O method, the rotor speed is perturbed by a small step, then the power output is observed to adjust the next perturbation on the rotor speed. In [9], [10], a constant step is introduced in the perturbation process. A variable step is employed in [1] by considering the slope of power changes. In [5], an adaptive memory algorithm is added to increase the

search operation. In [7], an advanced hill-climbing searching is proposed to work with different level of turbine inertia by detecting the inverter output power and inverter dc-link voltage.

In the WSM method, the wind speed and rotor speed are measured and used to determine the optimum tip speed ratio (TSR). In [3], fuzzy logic control is employed to enhance the performance by dealing the parameter insensitivity. This method is simple, but has the drawback as follows [13]: a) It is difficult and expensive to obtain accurate value of wind speed; b) The TSR is dependent on the wind energy system characteristics. In [8], two Artificial Neural Networks (ANN) called ANN's wind estimation (ANN_{wind}) and ANN's power estimation (ANN_{pe}) are adopted to estimate the wind speed and output power respectively. The estimated wind obtained by ANN_{wind} not only replaces the anemometer but also solves the problems of aging anemometer and moved position [8].

The PSF method tracks the maximum power by reading the current power output to determine the control mechanism to follow the maximum power curve stored in Lookup-table. In [6], fuzzy logic control is developed to overcome the uncertainties of the power curves. The main drawback of this method is that the maximum power curve should be obtained by simulations or experimental test. Thus it is difficult and expensive to be implemented [7].

Since wind speed varies unpredictable, it is convenient to develop the model to simulate the wind energy systems. Many researches simulate their proposed algorithm using model first before real implementation [2]-[8],[11],[12]. The model usually consists of wind generation model, converter model (DC-DC converter), load/battery model, and controller (MPPT controller) model. In this paper, we develop such models to simulate the MPPT algorithm to track the maximum power of the wind turbine (permanent magnet generator). Our model adopt the wind turbine model proposed by [2], our proposed buck converter model, and MPPT technique using P&O algorithm. The main contribution is in the model of DC-DC converter (buck converter) which is developed in rather details and allows the MPPT controller output (duty cycle) adjusts the ratio of voltage input-output of the converter. More

precisely, when the duty cycle is changed, the input voltage of the buck converter, i.e. the output voltage of the generator follows the changes appropriately. Therefore the input voltage of the buck converter is considered as the output of the model. There is a lack information in the literature considers this thing.

The organization of the paper is as follows. Section 2 describes the models of wind energy system. Section 3 presents the simulation results. Conclusion is covered in section 4.

II. SYSTEM MODELING

Figure 1 illustrates the configuration of wind energy system. The wind generator consists of a wind turbine coupled with a permanent magnet synchronous generator (PMSG). The rectifier is a three phase diode rectifier for converting three-phase AC voltage to DC voltage. The buck converter is a DC-DC converter that the voltage input-output ratio is controlled by a PWM (Pulse width modulation) signal from the MPPT controller. The MPPT controller read the voltage and current of the wind generator output to determine the PWM signal.

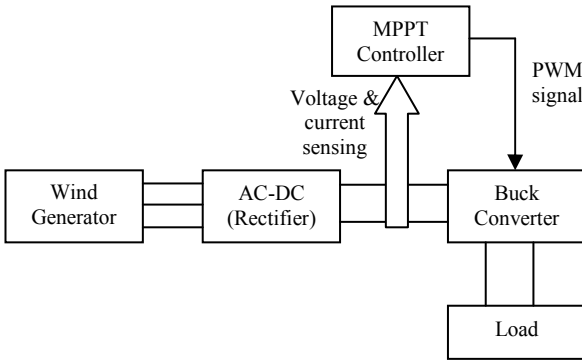


Fig. 1 The configuration of wind energy system

A. Wind Generator Model

Wind energy systems convert the kinetic energy of the wind into the electrical energy. The kinetic energy produced by a moving object is expressed as

$$E_{kin} = \frac{1}{2}mv^2 \quad (1)$$

In this case, m is the mass of air and v is the wind velocity. The mass m could be derived from

$$m = \rho(Ad) \quad (2)$$

where

ρ is the air density

A is the swept area of the rotor blade

d is the distance travelled by the wind.

The mechanical power of the wind turbine (P_w) is defined is the kinetic energy over the time (t), thus P_w is expressed as

$$P_w = \frac{E_{kin}}{t} = \frac{\frac{1}{2}\rho Adv^2}{t} = \frac{1}{2}\rho Av^3 \quad (3)$$

The power expressed by Eq. (3) is the ideal power captured by the wind turbine. The actual power of the wind turbine

depends on the efficiency of the turbine represented by $C_p(\lambda, \beta)$ which is the function of the *tip speed ratio* (λ) and pitch angle (β). The *tip speed ratio* (λ) is defined [5] to be the ratio between the turbine speed and the wind speed, and is given by

$$\lambda = \frac{\omega R}{v} \quad (4)$$

where ω is the turbine angular speed, and R is the radius of the turbine. Therefore, the actual power captured by the wind turbine is given by

$$P = \frac{1}{2}C_p(\lambda, \beta)\rho Av^3 \quad (5)$$

Then, the torque of the wind turbine could be expressed as [2]

$$T = \frac{1}{2}C_t(\lambda, \beta)\rho ARv^2 \quad (6)$$

where $C_t(\lambda, \beta) = C_p(\lambda, \beta)/\lambda$ is the torque coefficient of the wind turbine.

The turbine power coefficient $C_p(\lambda, \beta)$ is a non linear function and expressed by a generic function [6]

$$C_p(\lambda, \beta) = 0.5176 \left(\frac{116}{\lambda_i} - 0.4\beta - 5 \right) e^{\frac{-21}{\lambda_i}} + 0.0068\lambda \quad (7)$$

with

$$\frac{1}{\lambda_i} = \frac{1}{\lambda + 0.08\beta} - \frac{0.035}{\beta^3 + 1} \quad (8)$$

Figure 2 shows the C_p - λ characteristics for the different values of β . From the figure, we may observe that for a fixed pitch angle, a maximum C_p is achieved when the *tip speed ratio* is at the optimal value (λ_{opt}). Recall Eq. (4), for a given wind speed (v), to achieve the maximum C_p , then the rotor speed should be maintained to the optimal speed (ω_{opt}).

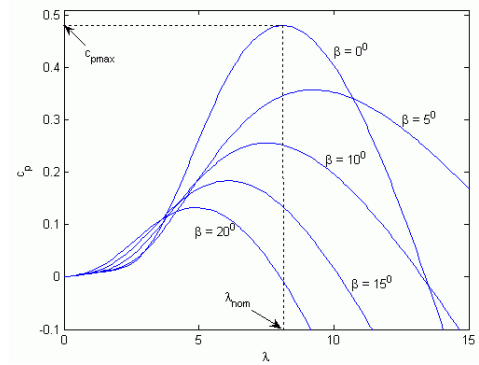


Fig. 2 The C_p - λ characteristics [14]

When the wind speed changes, the rotor speed and the power captured by the wind turbine will change. According to Eqs. (4), (5), (7), for a certain wind speed, the power will be varied with respect to the rotor speed (ω), and there is a point when the power is maximum, i.e. at the optimal rotor speed (ω_{opt}). Figure 3 illustrates the curves of the wind turbine power versus the rotor speed (ω) for the different wind

speeds. From the figure, it is clear that for the different power curves, the maximum powers are achieved at the different rotor speeds. Therefore, the rotor speed should be operated at the optimum speed. This technique is called as MPPT (Maximum Power Point Tracking) technique as discussed in the next section.

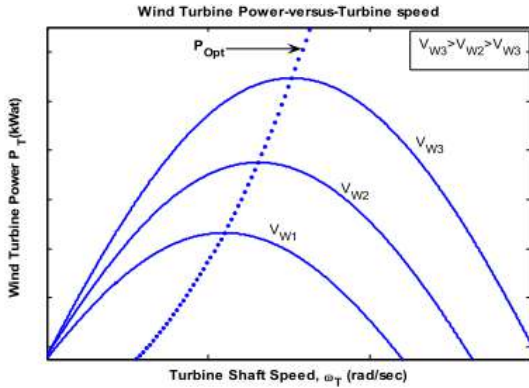


Fig. 3 The wind turbine power curves [13].

In this paper, the permanent magnet synchronous generator (PMSG) is modeled as proposed by [2]. The dynamic model of the generator is given by the following equations:

$$\dot{i}_q = -\frac{R_s}{L}i_q - \omega_e i_d + \frac{\omega_e \phi_m}{L} - \frac{v_s i_q}{L\sqrt{i_q^2 + i_d^2}} \quad (9)$$

$$\dot{i}_d = -\frac{R_s}{L}i_d - \omega_e i_q - \frac{v_s i_d}{L\sqrt{i_q^2 + i_d^2}} \quad (10)$$

$$\dot{\omega}_e = \frac{P}{2J} \left(T_t - \frac{3}{2} \frac{P}{2} \phi_m i_q \right) \quad (11)$$

$$\omega_e = \frac{P \omega_m}{2} \quad (12)$$

where

i_q is the quadrature current

i_d is the direct current

L is the inductance of the stator windings

R_s is the resistance of the stator windings

ω_e is the electrical angular speed

ϕ_m is the flux linked by the stator windings

v_s is the line voltage in the PMSG terminals

P is the number of poles

J is the inertia of the rotating system

T_t is the turbine torque

ω_e is the angular rotor speed.

B. MPPT

The most common technique used in the MPPT controller is Perturb and Observe (P&O) technique [1], [10], [13], [16]. This method is based on perturbing the rotor speed in small steps and observing the changes in power. In the PMSG, the output current and voltage are proportional to the torque and rotor speed. Thus perturbing or varying the output voltage of the generator will cause the varying in rotor speed. Perturbing

the voltage could be performed by adjusting the duty cycle (PWM signal) of the buck converter as shown in Fig. 1.

Flowchart of the P&O algorithm is illustrated in Fig. 4. The P&O algorithm operates by varying the duty cycle of the buck converter, thus varying the output voltage of the wind generator, and observe the resulting power to increase or decrease the duty cycle in the next cycle. If the increase of duty cycle produces an increase of the power, then the direction of the perturbation signal (duty cycle) is the same as the previous cycle. Contrary, if the perturbation duty cycle produces a decrease of the power, then the direction of perturbation signal is the opposite from the previous cycle.

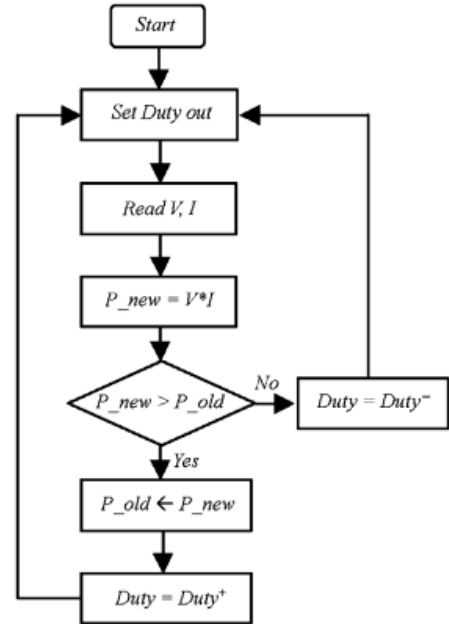


Fig. 4 P&O algorithm [16].

C. Buck Converter Model

Buck converter is used to step-down the DC voltage. The basic circuit of the buck converter is shown in Fig. 5. There are four main components: switching power MOSFET S , freewheeling diode D , inductor, and output filter capacitor C . The converter might work in two different modes: a) continuous conduction mode, in which the inductor's current never zero; b) discontinuous conduction mode, in which the inductor's current falls to zero during the part of period. In this paper, we only consider the continuous conduction mode.

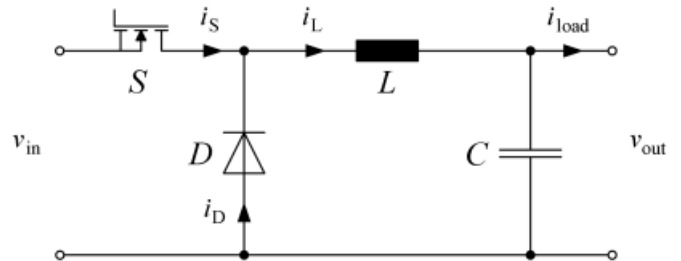


Fig. 5 Buck converter circuit [15].

In the continuous conduction mode, the buck converter could be in two different states: ON state and OFF state. Figs. 6(a) and 6(b) show the equivalent circuit in the ON state and OFF state, respectively, where R_S is the ON-resistance of the MOSFET and R_L is the resistance of inductor.

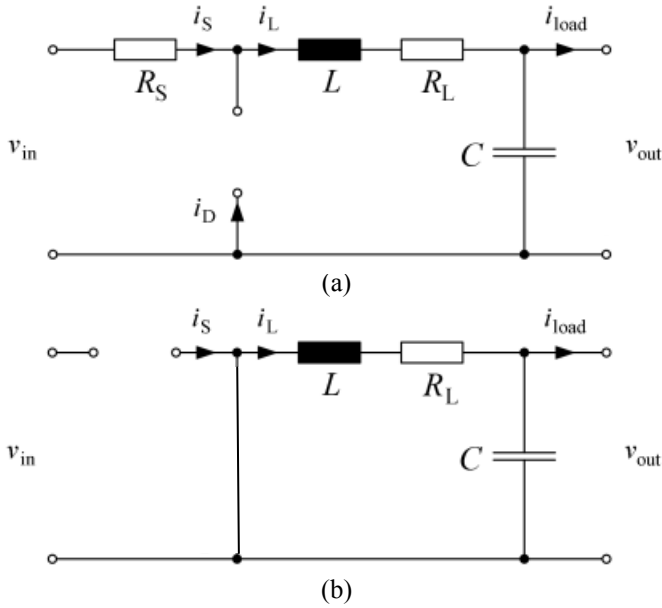


Fig. 6 Equivalent circuit in (a) ON state; (b) OFF state [15].

In the ON state, power MOSFET S is ON and diode D is OFF. The system equation is expressed as:

$$L \frac{di_L}{dt} = v_{in} - i_L(R_S + R_L) - v_{out} \quad (13)$$

$$C \frac{dv_{out}}{dt} = i_L - i_{load} \quad (14)$$

In the OFF state, MOSFET S is OFF and diode D is ON. The system equation is expressed as:

$$L \frac{di_L}{dt} = -(i_L R_L + v_{out}) \quad (15)$$

$$C \frac{dv_{out}}{dt} = i_L - i_{load} \quad (16)$$

The average voltage across the inductor in the steady state condition is the summation of Eqs. (13) and (15), yields

$$L \frac{di_L}{dt} = d(v_{in} - i_L(R_S + R_L) - v_{out}) + (1-d)(-i_L R_L - v_{out}) \quad (17)$$

$$= dv_{in} - di_L R_S - i_L R_L - v_{out}$$

Where d is the period of the ON state. The average current flowing in the capacitor in the steady state condition is the summation of Eqs. (14) and (16), yields

$$C \frac{dv_{out}}{dt} = d(i_L - i_{load}) + (1-d)(i_L - i_{load}) \quad (18)$$

$$= i_L - i_{load}$$

The average input current is given by

$$i_s = di_L \quad (19)$$

As described in previous section, the MPPT technique needs to change the output voltage of the wind generator, i.e. the input voltage of the buck converter to track the maximum power point. In the real hardware implementation, this requirement is easily accomplished, due to the input-output relationship of the buck converter. More clearly, when the input voltage of the converter is kept constant, varying the duty cycle will change the output voltage of the converter, and vice versa, when the output voltage of the converter is kept constant, varying the duty cycle will change the input voltage of the converter.

In the modeling (block modeling), the relationship between input-output is one direction in the sense that we could change the output by changing the input, but not conversely. Therefore to use with MPPT, the buck converter should be modeled appropriately. Our model (Simulink model) of the buck converter is shown in Fig. 7. The model input consists of i_s (input current of the converter), i_{load} (load current of the converter), d (duty cycle), and f_s (frequency of PWM signal). The model output consists of v_{in} (input voltage of the converter) and v_{out} (output voltage of the converter). It is noted here that input voltage of the converter is considered as the output of the model, thus we might change the input voltage of the converter (output of the model) by changing the duty cycle as required by MPPT technique.

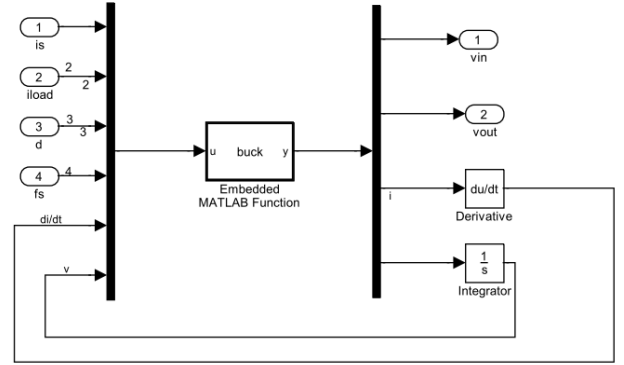


Fig. 7 Simulink model of the buck converter.

III. SIMULATION RESULTS

The model of wind energy system with MPPT control is simulated using MATLAB Simulink as shown in Fig. 8. There are three main blocks in the model: the wind generator (wind turbine, PMSG, and rectifier), the buck converter, and the MPPT.

In the experiments, three wind speed conditions of 8 m/s, 10 m/s, and 7 m/s are used to compare the wind energy system with and without MPPT control. In the system without MPPT control, the output voltage of the wind generator is fixed, while in the system with MPPT control, the voltage is adjusted by the MPPT controller. Fig. 9 and Fig. 10 show the simulation results for the systems without and with MPPT control, respectively.

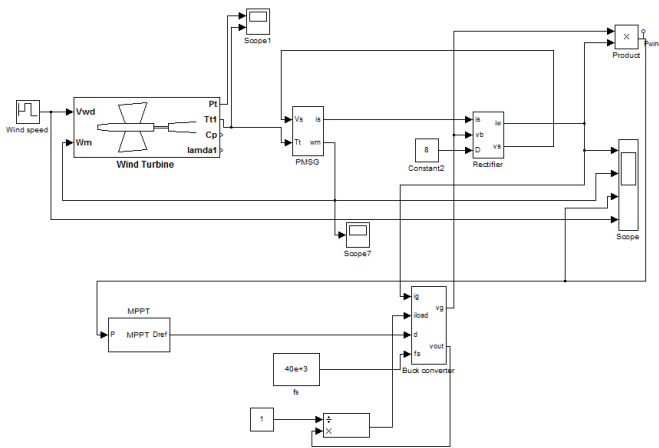


Fig. 8 Simulink model of wind energy system with MPPT control.

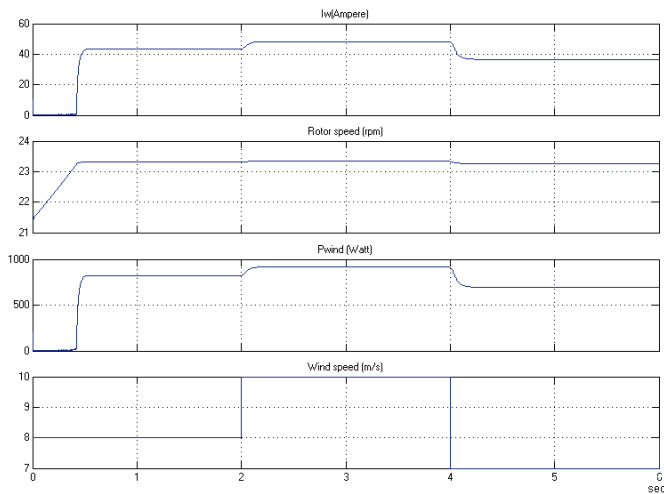


Fig. 9 Simulation result of wind energy system without MPPT control.

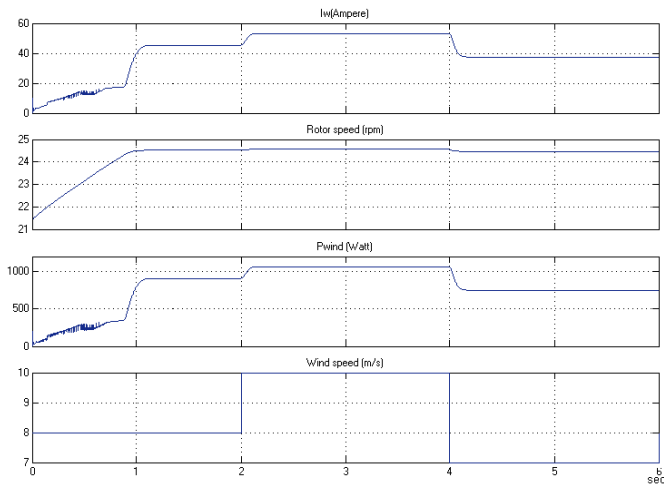


Fig. 10 Simulation result of wind energy system with MPPT control.

Both Fig. 9 and Fig. 10 show that when wind speed changes, the power of the wind generators follow changes accordingly. The faster wind speed produces higher power output. However, the power output produced by the system

without MPPT, i.e. when the output voltage of the generator is fixed, is lower compared to the system with MPPT as shown from the figures. It is proved the ability of the MPPT technique to find the maximum power.

IV. CONCLUSIONS

In this paper, the wind energy system is modeled using MATLAB Simulink. The model consists of the wind generator model, the buck converter model, and the MPPT control model. The simulation results show that the model behaves appropriately with the characteristics of the system to be modeled. Further, the modeled MPPT could track the wind energy system to find the maximum power extracted from the wind.

In future, the model will be extended to the various types of the MPPT algorithms as well as the various types of wind energy system components.

REFERENCES

- [1] E. Koutroulis and K. Kalaitzakis, "Design of a Maximum Power Tracking System for Wind-Energy-Conversion Applications", *IEEE Transactions on Industrial Electronics*, Vol. 53, No. 2, pp. 486-494, April 2006.
- [2] F. Valenciaga, P.F. Puleston, P.E. Battaiotto, "Power Control of a Solar/Wind Generation System Without Wind Measurement: A Passivity/Sliding Mode Approach", *IEEE Transactions on Energy Conversion*, Vol. 18, No. 4, pp. 501-507, Dec. 2003.
- [3] E. Adzic, Z. Ivanovic, M. Adzic, V. Katic, "Maximum Power Search in Wind Turbine Based on Fuzzy Logic Control", *Acta Polytechnica Hungaria*, Vol. 6, No. 1, pp 131-148, 2009.
- [4] A.M. Eltamaly, "Modeling of Wind Turbine Driving Permanent Magnet Generator with Maximum Power Point Tracking System" *Journal of King Saud University, Engineering Science (2)*, Vol. 19, pp.223-237, 2007.
- [5] J. Hui and A. Bakhshai, "A Fast and Effective Control Algorithm for Maximum Power Point Tracking in Wind Energy Systems" in the *proceedings of the 2008 World Wind Energy Conference*.
- [6] M. Azouz, A. Shaltout, M.A.L. Elshafei, "Fuzzy Logic Control of Wind Energy Systems", in *Proceedings of the 14th International Middle East Power Systems Conference*, pp. 935-940, Dec. 2010.
- [7] Q. Wang, L. Chang, "An Intelligent Maximum Power Extraction Algorithm for Inverter-Based Variable Speed Wind Turbine Systems", *IEEE Transactions on Power Electronics*, Vol. 19, No. 5, pp. 1242-1249, Sept. 2004.
- [8] C.Y. Lee, Y.X. Shen, J.C. Cheng, C.W. Chang, Y.Y. Li, "Optimization Method Based MPPT for Wind Power Generators", *World Academy of Science, Engineering and Technology* 60, pp 169-172, 2009
- [9] G. Moor, J. Beukes, "Maximum Power Point Tracking methods for small scale Wind Turbines", in *Proceedings of Southern African Telecommunication Networks and Applications Conference (SATNAC)* 2003.
- [10] H. Gitano, S. Taib, M. Khdeir, "Design and Testing of a Low Cost Peak-Power Tracking Controller for a Fixed Blade 1.2 kVA Wind Turbine", *Electrical Power Quality and Utilisation Journal*, Vol. XIV, No. 1, pp. 95-101, 2008.
- [11] S. Belakehal, H. Benalla, A. Bentounsi, "Power Maximization Control of Small Wind System Using Permanent Magnet Synchronous Generator", *Revue des Energies Renouvelables*, Vol. 12. No. 2, pp. 307-319, 2009.
- [12] T. Pan, Z. Ji, Z. Jiang, "Maximum Power Point Tracking of Wind Energy Conversion Systems Based on Sliding Mode Extremum Seeking Control", in *Proceeding of IEEE Energy 2030*, 2008.
- [13] S.M. Barakati, "Modeling and Controller Design of a Wind Energy Conversion System Including a Matrix Converter", PhD thesis in Electrical Engineering, University of Waterloo, Canada, 2008.

- [14] [Http://www.mathworks.com/help/toolbox/physmod/powersys/ref/wind turbine.html](http://www.mathworks.com/help/toolbox/physmod/powersys/ref/wind_turbine.html)
- [15] J.V. Gragger, A. Haumer, M. Einhorn, "Averaged Model of a Buck Converter for Efficiency Analysis", *Engineering Letter*, Vol. 18, Issue 1, 2010.
- [16] J. A. Jiang, T.L. Huang, Y.T. Hsiao, C.H. Chen, "Maximum Power Tracking for Photovoltaic Power Systems", *Tamkang Journal of Science and Engineering*, Vol. 8, No.2, pp. 147-153, 2005.